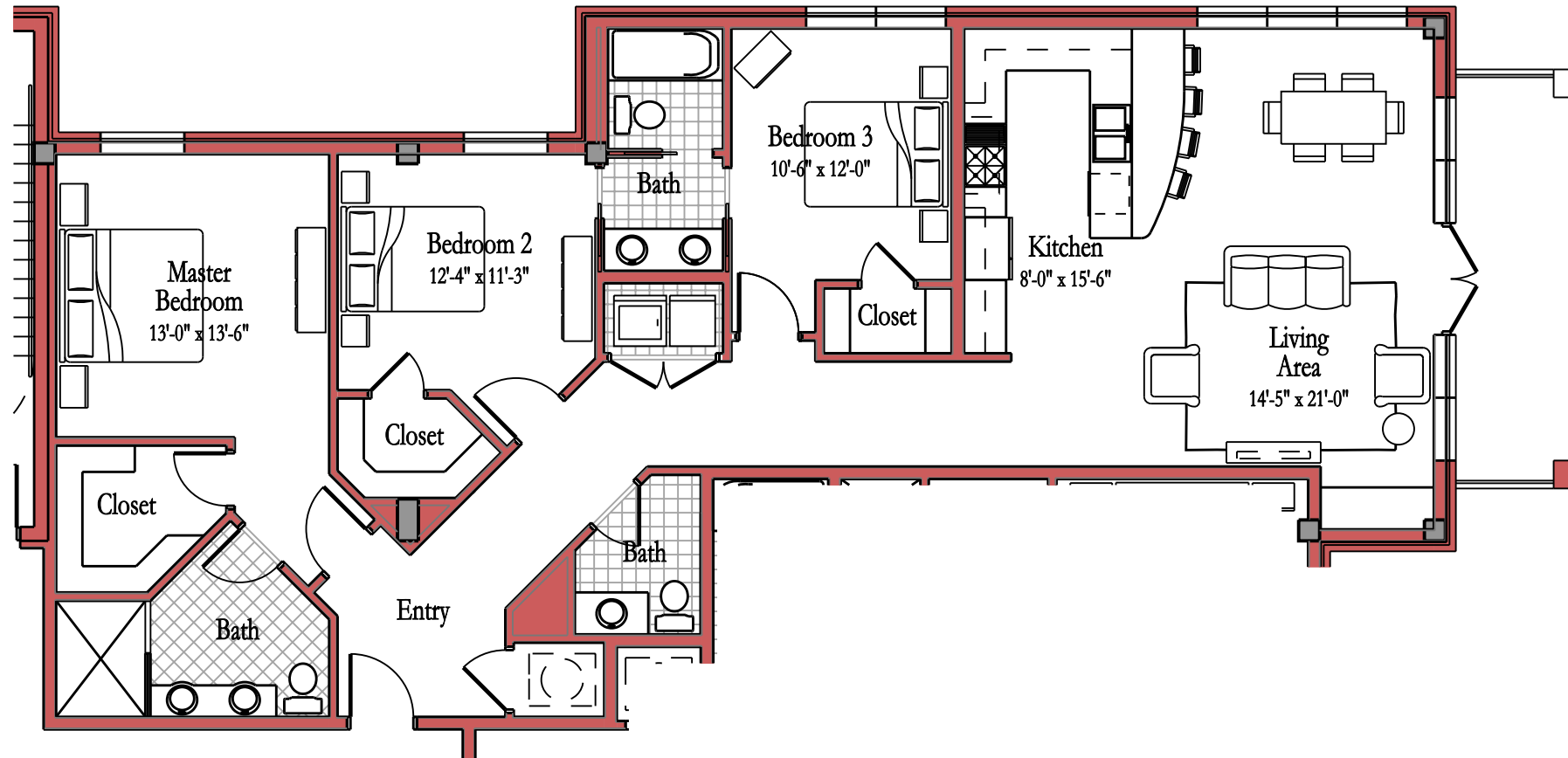


Unit "F7" - Alternate

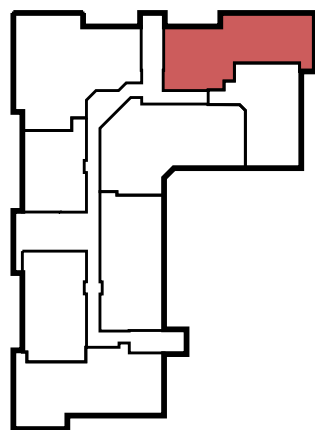
3 Bedroom / 2 1/2 Bath
 1,736 Square Feet



Standard Unit Features:

- Island Kitchen
- Stainless Steel Appliances
- Direct-vent Range Hood
- Granite Kitchen Countertops
- Washer and Dryer
- Walk-in Closets
- Double Vanity - Master Bath
- Balcony
- Hardwood Floors in Living Spaces
- Ceramic Tile in Baths
- Carpet in Bedrooms

Optional Upgrade Features:



Building "F" Alternate Key Plan

ISSUED:

FOXLAND HARBOR
 BUILDING - F
 UNIT PLANS

FOXLAND HARBOR
 AT FAIRVIEW PLANTATION
 GALLATIN, TENNESSEE

DESIGNED BY: M.L. MANOUS
 M.D. KAWCZYNSKI
 DRAWN BY: T. TIDMORE
 APPROVED BY:
 DATE: JULY 1, 2008

A5.7A

PRELIMINARY-NOT FOR CONSTRUCTION

ALL CONCEPTS ARE PRELIMINARY AND SUBJECT TO CHANGE WITHOUT NOTICE

SHEET OF
 PROJECT NAME MD-0718